

FT - TECHNICAL SHEET

Retro-reflective reflector for horizontal signaling of roads

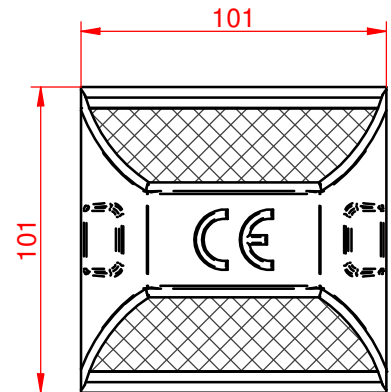
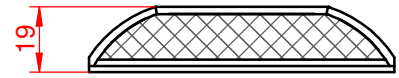
CLASSIFICATION:

According to EN1463-1:2021 Standard and Test Report No.CE 0099/CPR/A72/0151:

PRODUCT WITH CE CERTIFICATE



Declared P2A -Section 4	-P: Permanent use. -2: Polycarbonate Optics. -A: Not depreisible (Rigid).
Dimensions - Section 5.2	H2 and HD1
Retro reflectance - Section 5.3.1.1	PRP1
Colorimetric Classification - Section 5.3.2	NCR1



DESCRIPTION:

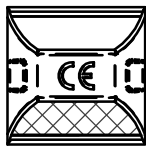
Body injected at high pressure in Polycarbonate reinforced with epoxy mass. Optic made of polycarbonate with high resistance to abrasion and waterproofing guaranteed to dust and water. Base rough with silica sand of minimum granulometry embedded in the dough.

INSTALLATION:

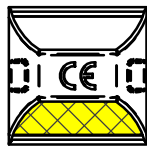
By applying two-component pasty adhesive. 2.5Kg bottle with its powder catalyst sachet. Gray. Suitable for fixing plastic or metal elements in asphalt or concrete substrates. Usage temperature range: between 5°C and 40°C. Ref. CAPTAGUM25.

PACKAGING:

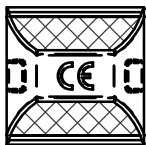
Box: 100 pcs (56x24x23cm) 20.5Kg gross weight



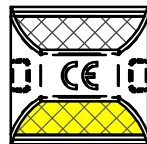
Ref. CAPTAAC01



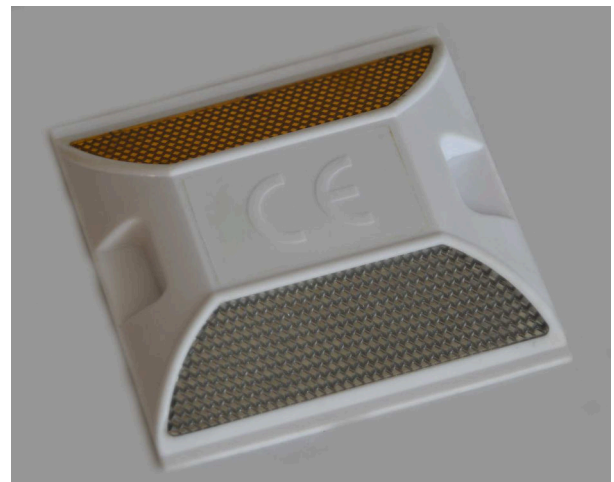
Ref. CAPTAAC02



Ref. CAPTAAC11



Ref. CAPTAAC12



ROADSTUD BASE REFLECTORS

CAPTAAC

A4	Wide-angle optics with the following R1 values:	Input Angle $\beta_2=\beta_1=0^\circ$	0°	10-12-20
		Observation Angle	2°	
1:2.5		R1 mínimun (mcd/lux)		SC
		White optics	1332	
		Amber optics	636	
		Red optics	217	
FT95	REFLECTORS			